

AUTUMN/WINTER 2007 SPECIAL EDITION

£3.50

BRIDGE

FOR DESIGN



THE INTERNATIONAL RESOURCE FOR INTERIOR DESIGN

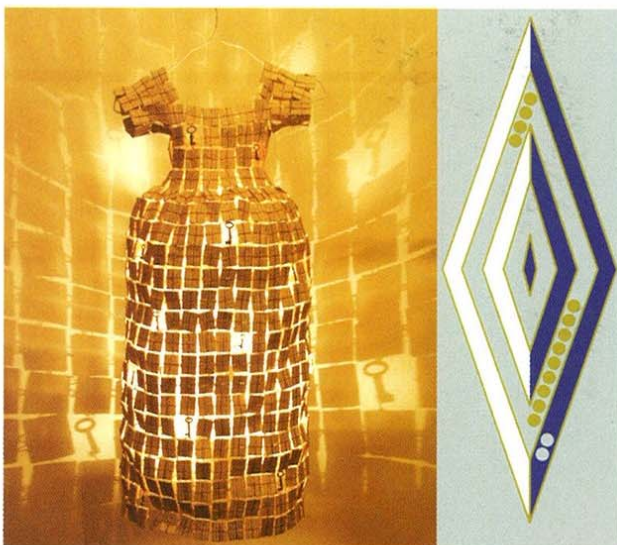
FORM: London

Art and Design at Kensington's Olympia

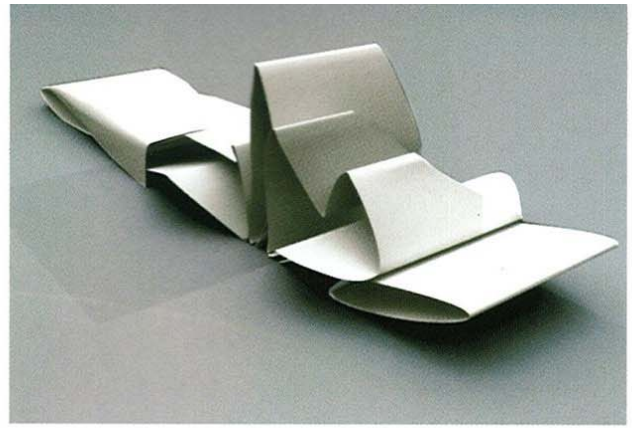
NOW IN ITS SECOND YEAR, FORM: LONDON IS an exciting public selling exhibition drawing together modern and contemporary art, design, photography, ceramics, jewellery and sculpture into one unique event. The show is one of the most relaxed art and design fairs and is aimed at a broad audience of new and established collectors, interior designers and industry professionals.

Confirmed exhibitors for the 2008 show include Saatchi Online, who will be staging an onsite exhibition dedicated to artists whose work has been chosen from the website by various well-known critics. Sebastian Conran will be launching his new book and is expected to be speaking at one of the FORUM talks, and Cole and Son have created an exclusive wallpaper design especially for FORM, available to buy at the fair, as is everything else on show. Also exhibiting will be the Galerie Birch, which is the oldest Danish gallery for modern art, founded in 1946. Galerie Birch will present a solo show by John Christoforou, a Greek born artist specialising in 'New Figuration'.

One of the highlights of the inaugural FORM: London was the dna feature, which will once again be a central part of the show, showcasing some of the most dynamic work in art and design. The artists are handpicked by a panel of experts including FORM: London's Creative Director, Russell Sage, and previous dna artists include furniture designer Max Lamb, wallpaper and textile designer Catherine Hammerton, metal designer Claire Malet and mixed media designer Su Blackwell.



Top: 'Squish - Sound Sculpture 1' by Phillip Michael Wolfson
 Top centre: Su Blackwell, 'dna'
 Above left: Christening Gown with Keys by Kelly Gardner, Saatchi Online
 Above right: Wallpaper by Cole and Son



This edition of FORM: London will also feature a new video installation area including work by Phillip Michael Wolfson of Wolfson Design, who is producing a sound sculpture for the exhibition. Wolfson's design 'Squish - Sound Sculpture 1' is a work in progress for a collection based on a re-interpretation of the 'Four Arts of the Chinese Scholar', a term used to describe the four main requirements of the Chinese scholar gentleman (in China to be a scholar is to be an artist).

"The emphasis for this year's show is ensuring that FORM: London has the right partners, sponsors and exhibitors to deliver a truly unique concept," says show manager, Ruth Minchin. "FORM: London is a celebration of 20th and 21st century art and design and is the only event of its kind in Europe. The show offers a platform for exhibitors to reach established and new collectors interested in buying unique pieces of art, design, photography and sculpture in an accessible and inspiring environment."

- www.catherinehammerton.com
- www.clairemalet.com
- www.cole-and-son.com
- www.conranandpartners.com
- www.galeriebirch.com
- www.maxlamb.org
- www.saatchi-gallery.co.uk
- www.sublackwell.co.uk
- www.wolfsondesign.com

FORM: London
 February 28 - March 2, 2008
 Olympia National Hall
 Hammersmith Road
 London W14 8UX
 Tickets: 0870 060 0199
www.form-london.com